

Chart of the Day

Maritime transport is the primary vehicle for globalized trade, accounting for **80% of global merchandise trade (by volume)**. A rising percentage of that trade, approximately 35% by volume and 60% by value, is carried by containers.

The **United States is the world's largest importer**, but none of its seaports are ranked in the top 75 globally. Remarkably, **40% of all US imports via container ships arrive through two ports only, Los Angeles and Long Beach**.

In a recent performance ranking of global ports by the World Bank Group and IHS Market, called the Container Port Performance Index (CPPI 2020), the **Los Angeles and Long Beach ports rank 328 and 333, respectively, out of 351 ports globally**.

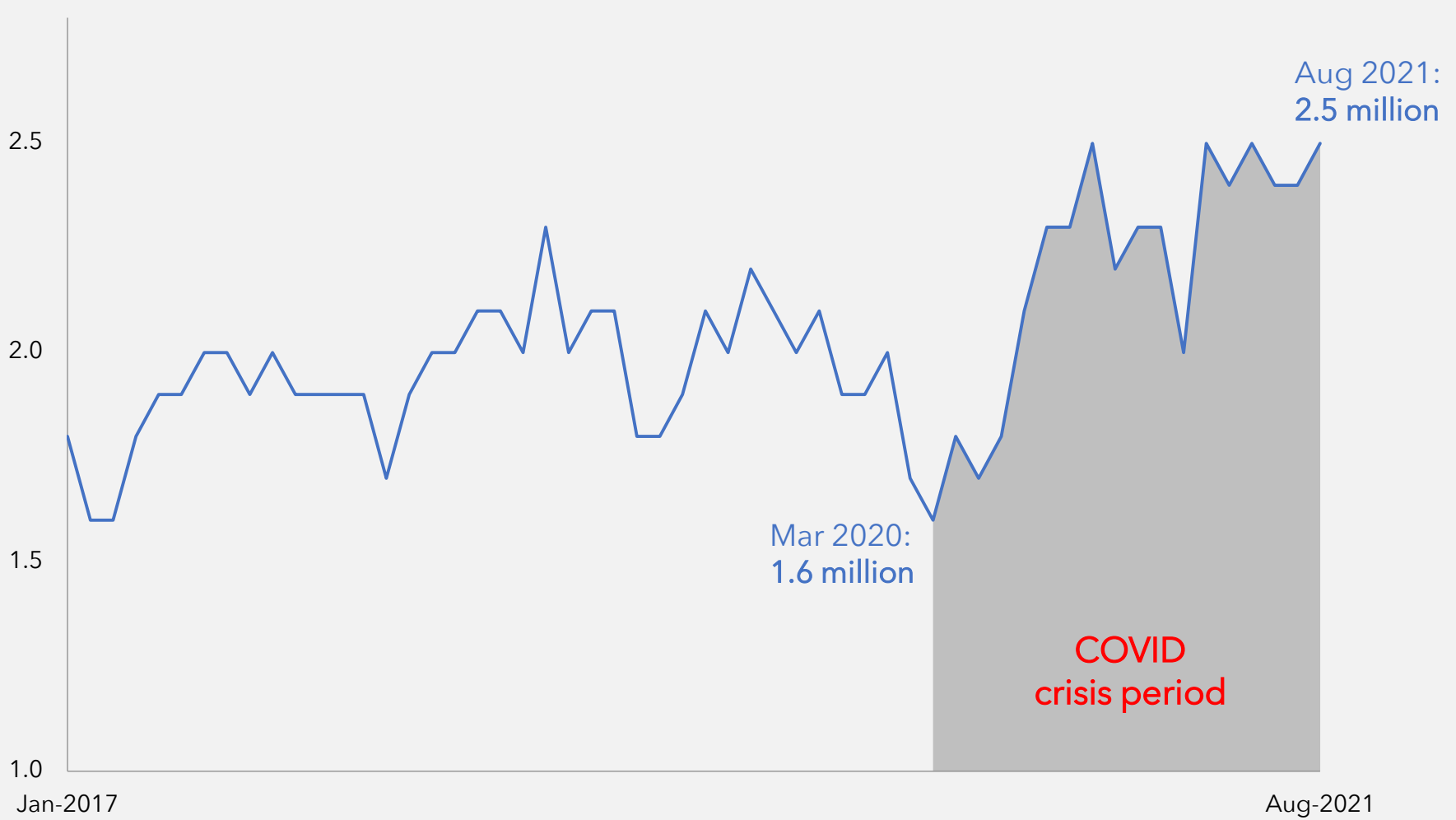
Nearly every one of the world's top 20 ports by performance are located in Asia or the Middle East. Japan's **Yokohama port ranks first**, while Saudi Arabia's King Abdullah port ranks second. Halifax, in Nova Scotia, Canada, is the highest ranked port in North America at 39. **Philadelphia and the Port of Virginia are the highest globally ranked US ports, at 83 and 85, respectively**.

Top 20 Ports in CPPI 2020 Global Ranking of Container Ports

Rank	Port Name	Country
1	Yokohama	Japan
2	King Abdullah Port	Saudi Arabia
3	Chiwan	China
4	Guangzhou	China
5	Kaohsiung	Taiwan
6	Salalah	Oman
7	Hong Kong, SAR	China
8	Qingdao	China
9	Shekou	China
10	Algeciras	Spain
11	Beirut	Lebanon
12	Shimizu	Japan
13	Tanjung Pelepas	Malaysia
14	Port Klang	Malaysia
15	Singapore	Singapore
16	Nagoya	Japan
17	Colombo	Sri Lanka
18	Sines	Portugal
19	Kobe	Japan
20	Zhoushan	China

Goods imported into the US on shipping containers are at record highs

Twenty foot equivalent units (TEUs)



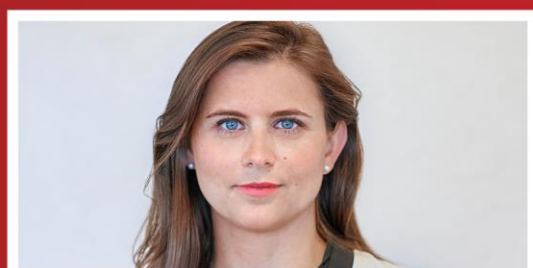
Source: (1) Transport Global Practice "The Container Port Performance Index 2020" World Bank Group. IHS Markit. Ranking based on statistical approach. (2) Bloomberg "US Ports Get Tough With Shipping Line as Containers Pile Up" (October 27, 2021). Unit is TEU, 20-foot equivalent units of containers. Goods imported on shipping containers is based on 35 US container ports.

Global Corporate & Investment Banking Capital Markets Strategy Team



Tom Joyce
Managing Director

Tom.Joyce@mufgsecurities.com
(212) 405-7472



Hailey Orr
Director

Hailey.Orr@mufgsecurities.com
(212) 405-7429



Stephanie Kendal
Associate

Stephanie.Kendal@mufgsecurities.com
(212) 405-7443