

Chart of the Day



Percent of US Population Vaccinated, by State

State	% 2 doses	% booster	State	% 2 doses	% booster	State	% 2 doses	% booster
Vermont	76.7%	35.1%	Minnesota	65.0%	28.0%	Alaska	56.0%	18.3%
Rhode Island	75.8%	28.4%	Illinois	63.9%	22.2%	Ohio	54.9%	20.5%
Maine	75.3%	30.2%	Delaware	63.5%	19.8%	Kentucky	53.8%	17.6%
Connecticut	74.2%	25.6%	Pennsylvania	63.3%	18.6%	Montana	53.7%	20.2%
Massachusetts	74.0%	25.4%	Hawaii	62.9%	10.9%	Oklahoma	53.1%	14.5%
West Virginia	71.6%	12.9%	Florida	62.9%	18.0%	South Carolina	52.7%	15.0%
New York	71.1%	20.5%	Wisconsin	61.5%	25.1%	Missouri	52.7%	16.5%
New Jersey	70.0%	21.3%	Nebraska	59.4%	22.1%	North Dakota	52.1%	18.0%
Maryland	69.9%	23.8%	Iowa	58.5%	24.0%	Indiana	51.7%	16.7%
Virginia	67.5%	22.3%	Utah	58.0%	15.4%	Tennessee	51.0%	16.5%
Washington	67.4%	23.2%	South Dakota	56.5%	18.0%	Arkansas	50.8%	14.2%
Distr. of Colum.	66.9%	16.1%	Arizona	56.5%	15.5%	Georgia	50.6%	12.6%
New Hampshire	66.4%	6.6%	Texas	56.5%	14.3%	Louisiana	49.9%	13.8%
Oregon	66.1%	23.7%	Kansas	56.5%	17.3%	Mississippi	48.0%	11.9%
New Mexico	65.7%	23.9%	Michigan	56.4%	21.7%	Alabama	48.0%	47.2%
Colorado	65.7%	24.7%	North Carolina	56.2%	10.4%	Wyoming	47.1%	15.9%
California	65.5%	19.5%	Nevada	56.0%	14.8%	Idaho	46.0%	16.6%

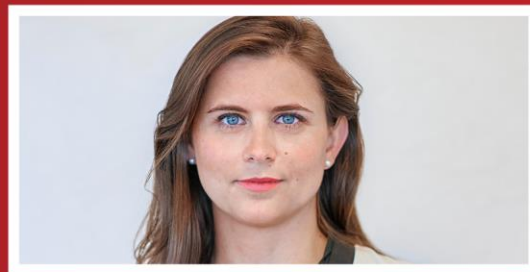
Source: Bloomberg. Data as of December 22, 2021.

Global Corporate & Investment Banking Capital Markets Strategy Team



Tom Joyce
Managing Director

Tom.Joyce@mufgsecurities.com
(212) 405-7472



Hailey Orr
Director

Hailey.Orr@mufgsecurities.com
(212) 405-7429



Stephanie Kendal
Associate

Stephanie.Kendal@mufgsecurities.com
(212) 405-7443