

The AI Weekly

LEARN MORE
Click Here

Click or scan to view our website and access past reports, policy notes and more.

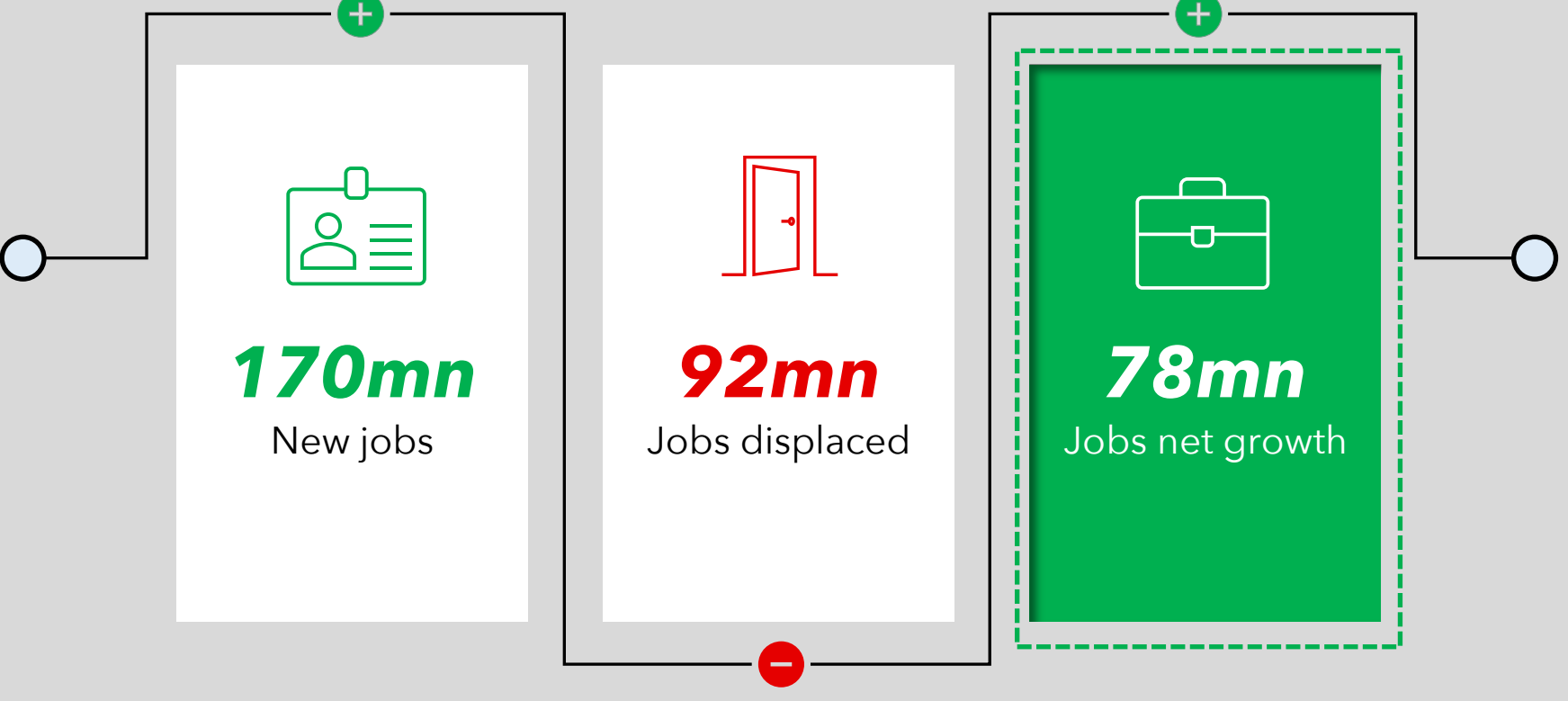


Tech Inflection Points Are Net Job Creators



According to the World Economic Forum, structural labor market changes driven by technology innovation, the green transition, economic uncertainty, geo-economic fragmentation and demographic shifts will create 170 million new jobs over the next five years. This growth is expected to be offset by the displacement of 92 million jobs, resulting in 78 million new jobs. However, even with net job creation, technology and AI-induced labor market disruption is likely to be formidable.

Job creation over 2025-2030 period



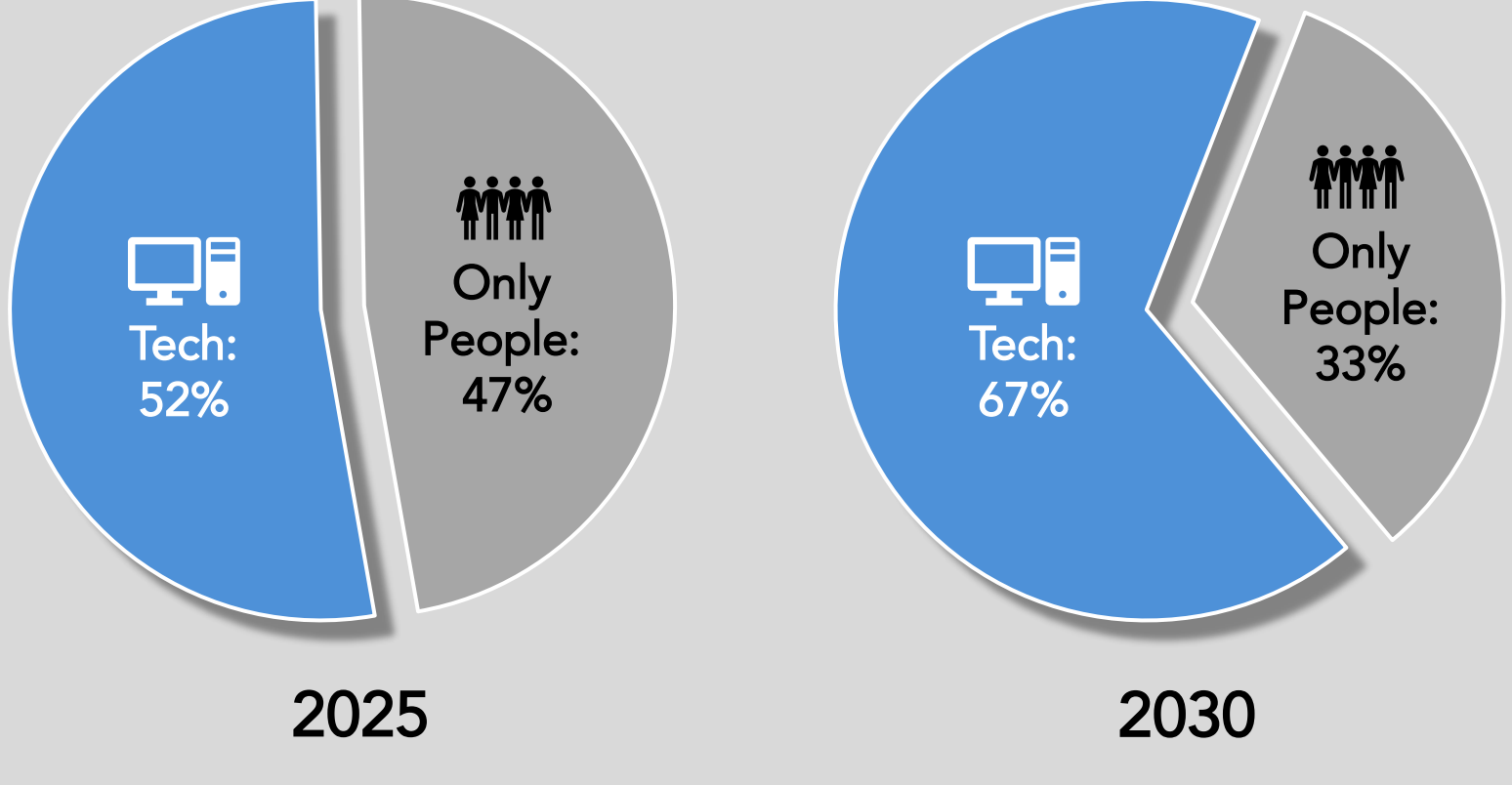
Source: World Economic Forum, "The Future of Jobs Report 2025" (January 2025).

Automation Displacing Rising Share of Workflows



The World Economic Forum's recent Future of Jobs report concluded that rapid advances in AI, robotics and information-processing technologies will automate a growing share of routine and analytical workflow tasks by 2030, reshaping roles across nearly all industries. With millions of jobs displaced, much of the new job creation will shift toward oversight, problem-solving and collaboration with intelligent systems. At the task level, much of the impact will come from partial automation, with productivity in numerous existing positions increased in "co-pilot" mode with AI.

Share of tasks completed



Source: (1) World Economic Forum, "The Future of Jobs Report 2025" (January 2025). Tech is tech only and tech & people. Percentages may not sum to 100% due to rounding.

Expected Drivers of Global Labor Market Change



Technology is expected to be the most divergent driver of labor market change, with broadening digital access expected to create and displace more jobs than any other trend.

Expected net job impact based on technology trends (2025-2030), millions of jobs



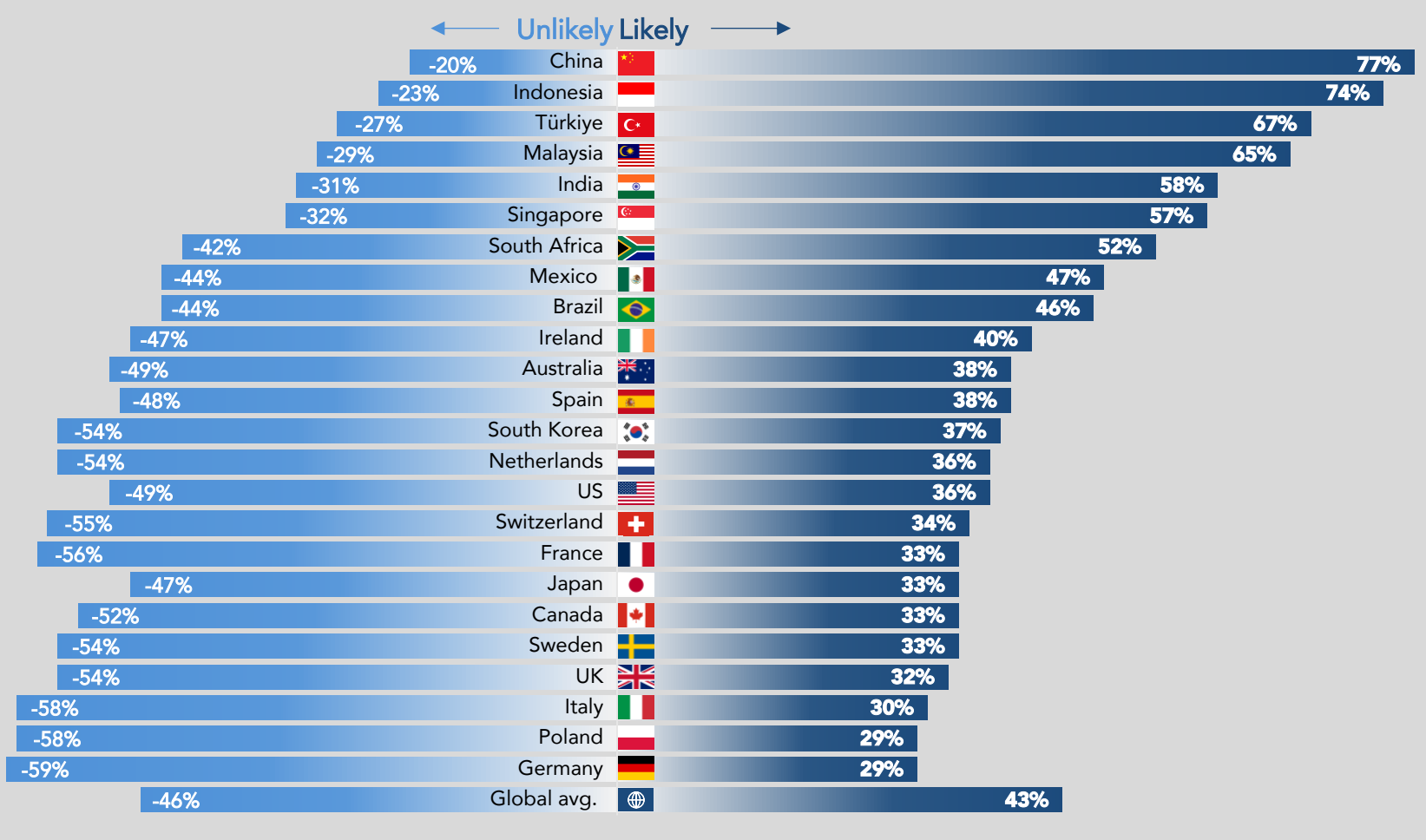
Source: (1) World Economic Forum, "The Future of Jobs Report 2025" (January 2025). Data based on the job down and decline attribution expectations of surveyed employers and ILO employment figures by occupation. The projected net number of jobs created or destroyed attributed to each trend in the next five years is calculated by subtracting the total number of declining jobs from the total number of growing jobs.

Global Sentiment Varies Sharply on AI Job Creation



As evident in a global survey of nearly 25,000 people across 34 countries, global sentiment varies significantly around AI's expected impact on labor markets. Generally speaking, survey respondents across Asia were much more optimistic about AI's positive impact on new job creation than other regions globally.

AI impact on new job creation by country, % of respondents

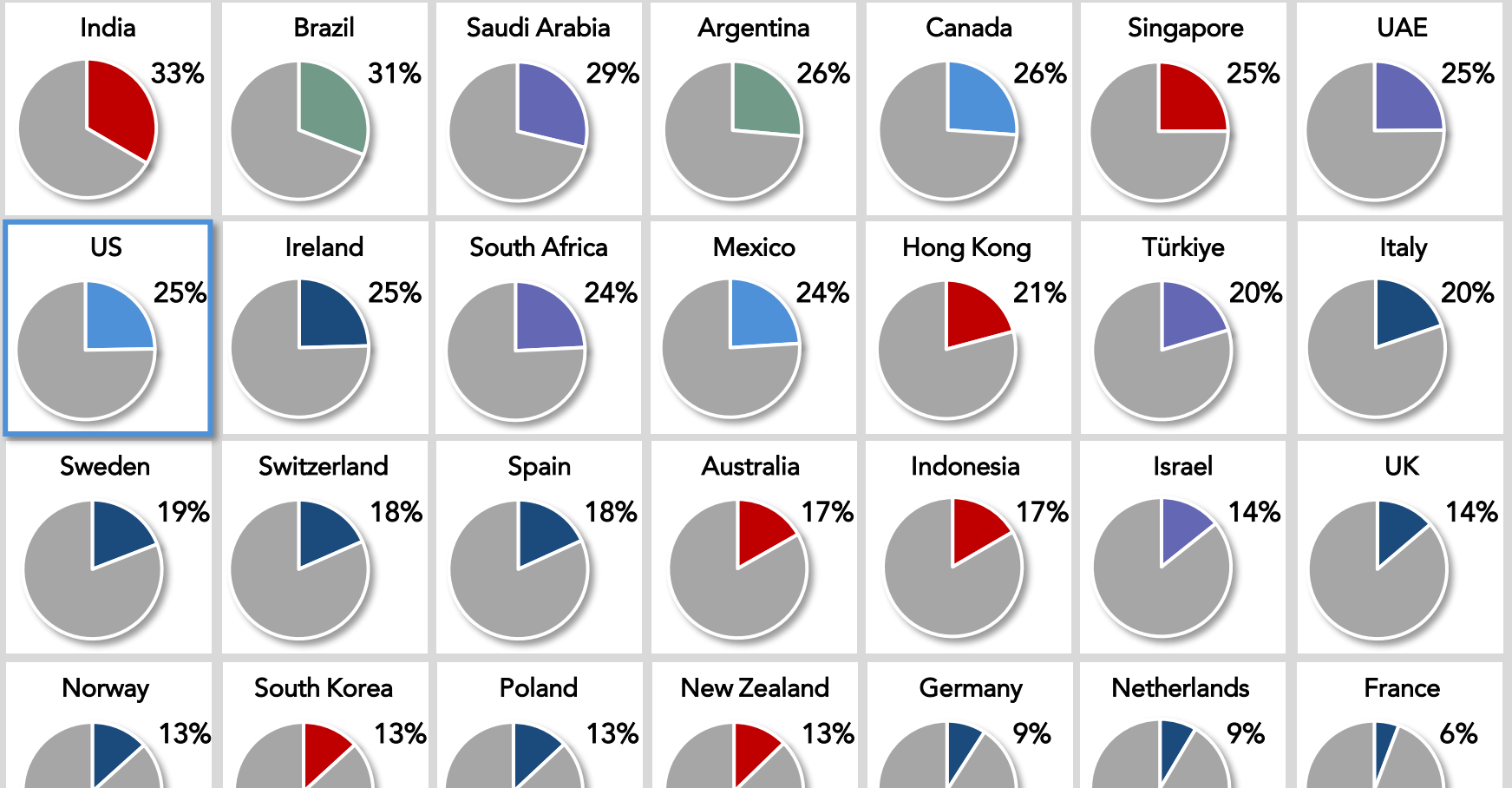


Source: (1) Visual Capitalist. Ipsos, "Predictions for 2025". Survey of 23,721 people from 34 countries conducted October 25 - November 8, 2024. Percentages may not add up to 100 due to rounding, multiple responses, or the exclusion of "don't know" or unstated responses.

Growth in AI Hiring (2024)



Growth in AI hiring relative to overall hiring, y/y (2024 vs. 2023)

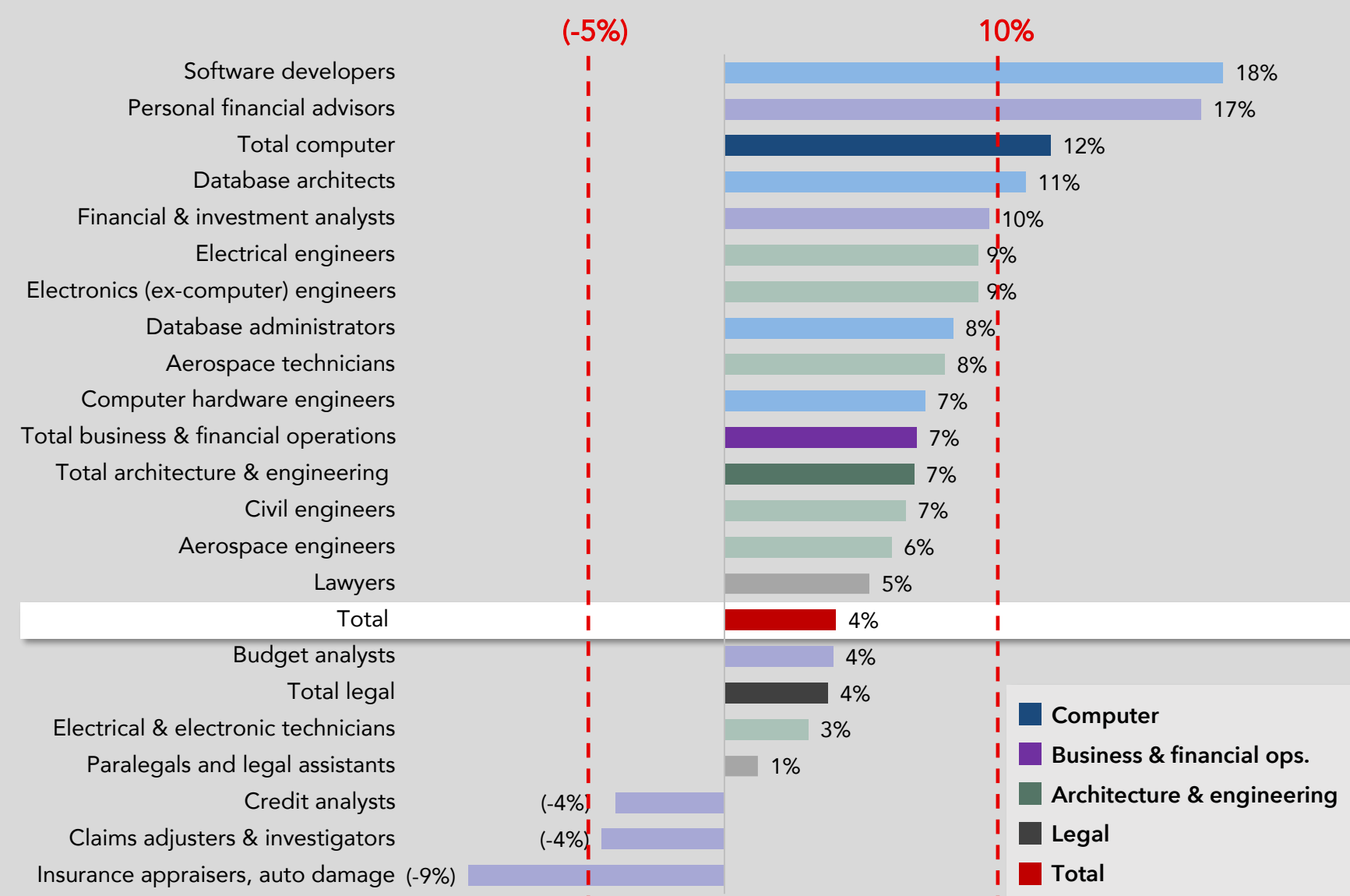


Legend: APAC (Red), Europe (Blue), N. America (Light Blue), S. America (Green), Middle East & Africa (Purple)

Source: (1-28) AI Index Steering Committee, Stanford University Institute for Human-Centered AI, "The AI Index 2025 Annual Report" (April 2025). LinkedIn (2024). Data not available for China and Japan.

AI's Projected Impact on Selected Occupations

AI's projected impact on selected occupations from 2023-33, % change



Source: (1) BLS, "AI Impacts in BLS Employment Projections". 2033 data is BLS forecasted employment.

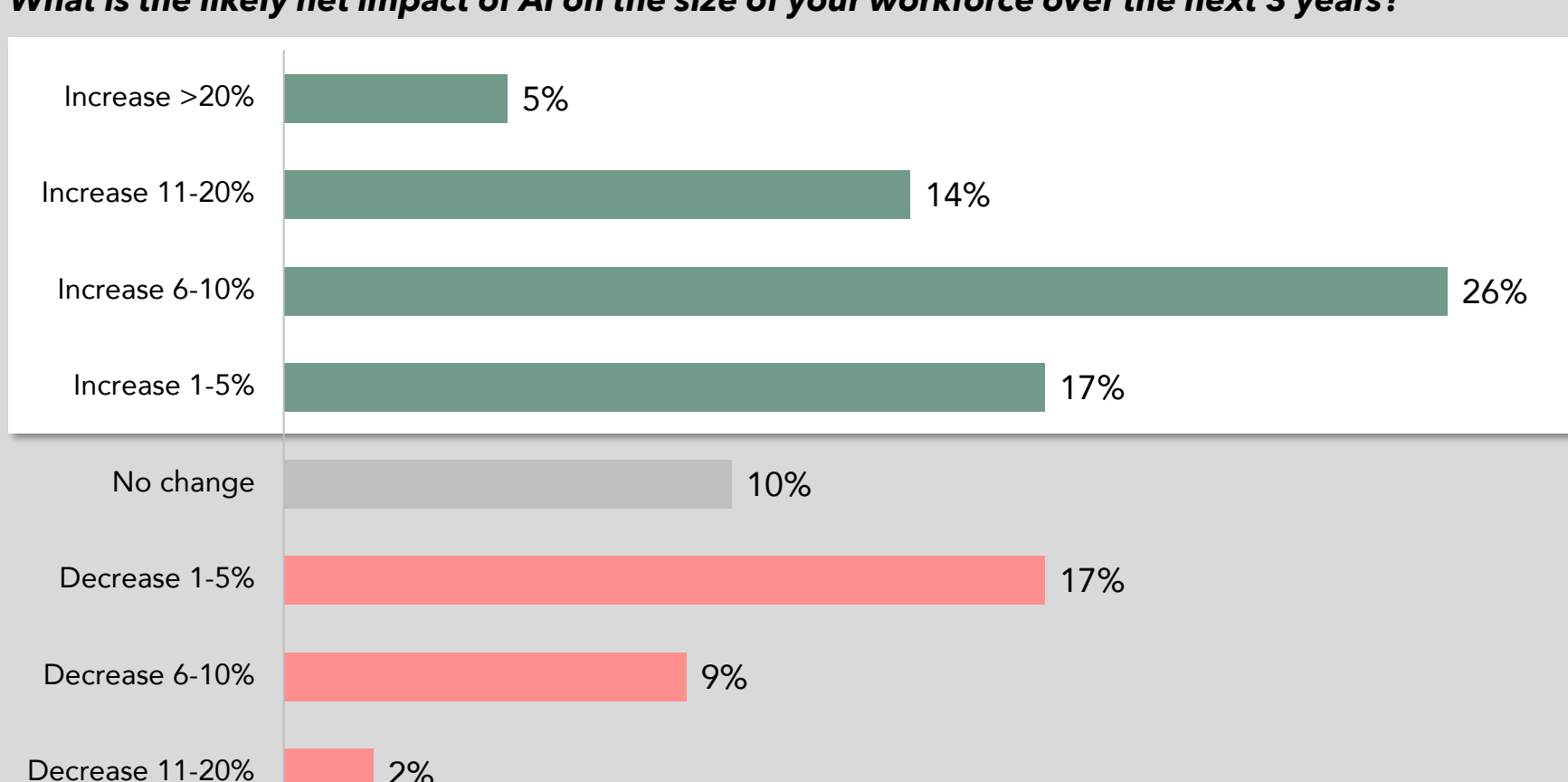
Companies Expect AI to Expand Workforces



A Bloomberg Intelligence survey of more than 600 senior executives at large companies in December 2025 indicated that most large companies expect AI to drive more workforce expansion than reduction. A majority of respondents view AI in terms of labor augmentation, automating routine tasks in a manner that transforms labor market skills and productivity, rather than primarily downsizing.

Bloomberg Intelligence:

What is the likely net impact of AI on the size of your workforce over the next 3 years?



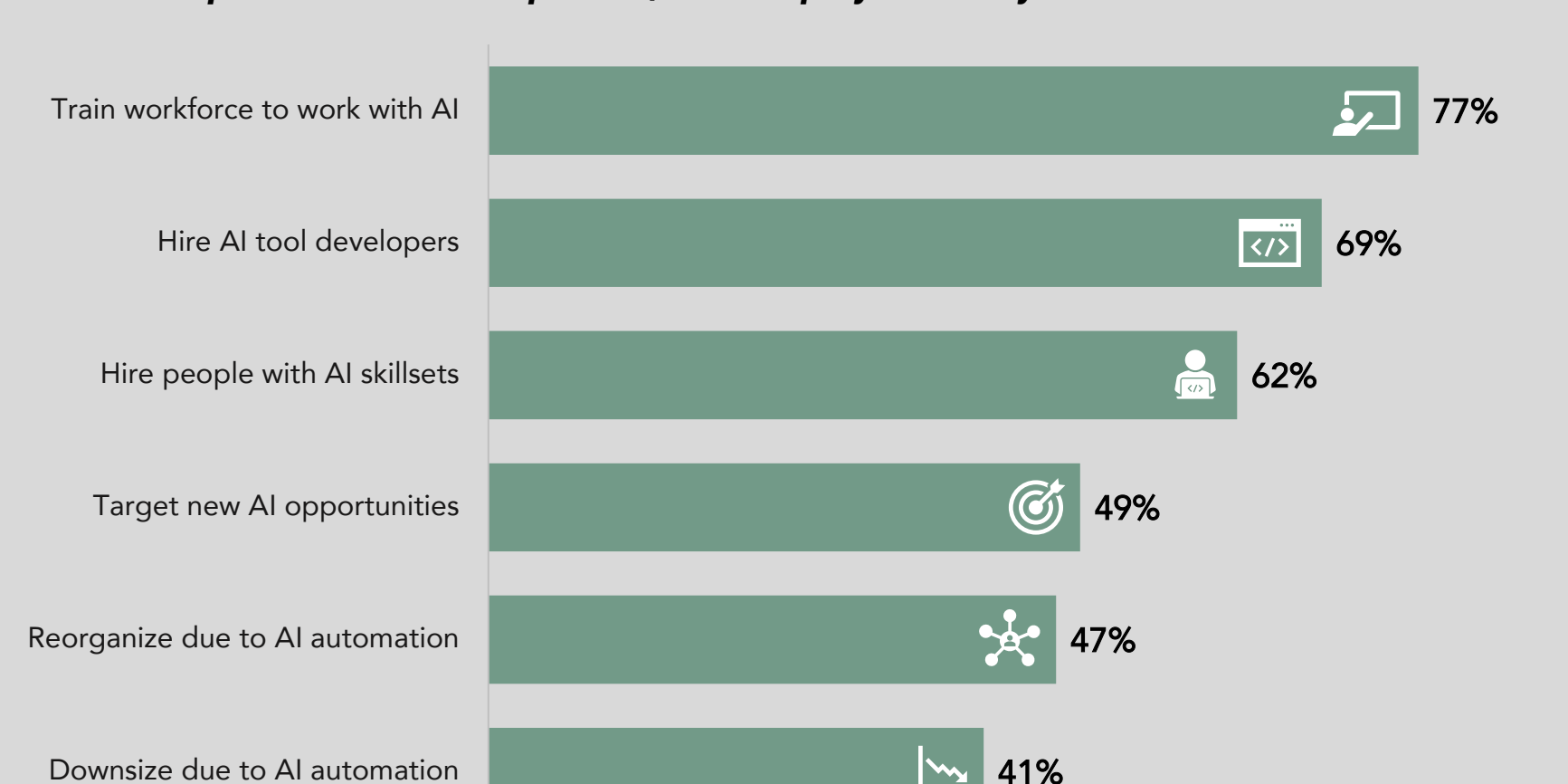
Source: (1) Bloomberg Intelligence, "Enterprise AI Strategy Survey" (Dec 2025). Survey of 604 senior executives at large companies (> 5,000 FTEs) across a range of sectors and regions conducted September 10 - October 8, 2025. Respondents self-identified as being knowledgeable about their company's cost structure, and current and planned use of AI. Survey conducted across nine major sectors. 50% of respondents in North America, 36% in Europe, 14% in APAC (ex-China).

Focus on Workforce Augmentation



The World Economic Forum's global labor market study expects businesses to focus more on adapting workforces to utilize AI, enhancing and amplifying skills more so than employee reorganization, replacement and downsizing.

Business responses to AI developments, % of employers surveyed



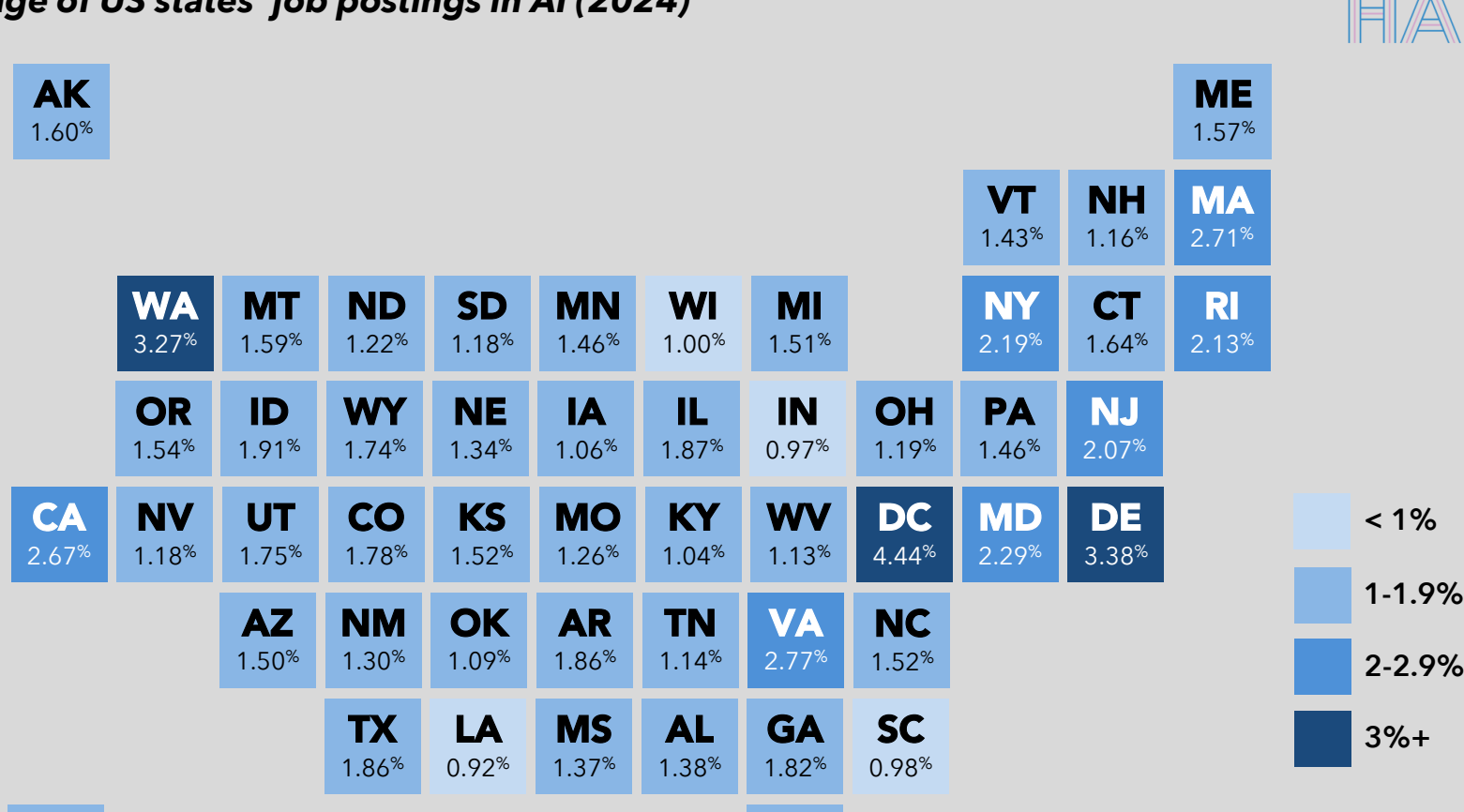
Source: (1) World Economic Forum, "The Future of Jobs Report 2025" (January 2025).

AI Labor Demand by State



The three large states of California, Texas, and New York lead aggregate US AI job postings by states, though Washington D.C., Washington state, and Delaware lead in AI job postings as a percentage of total jobs.

Percentage of US states' job postings in AI (2024)



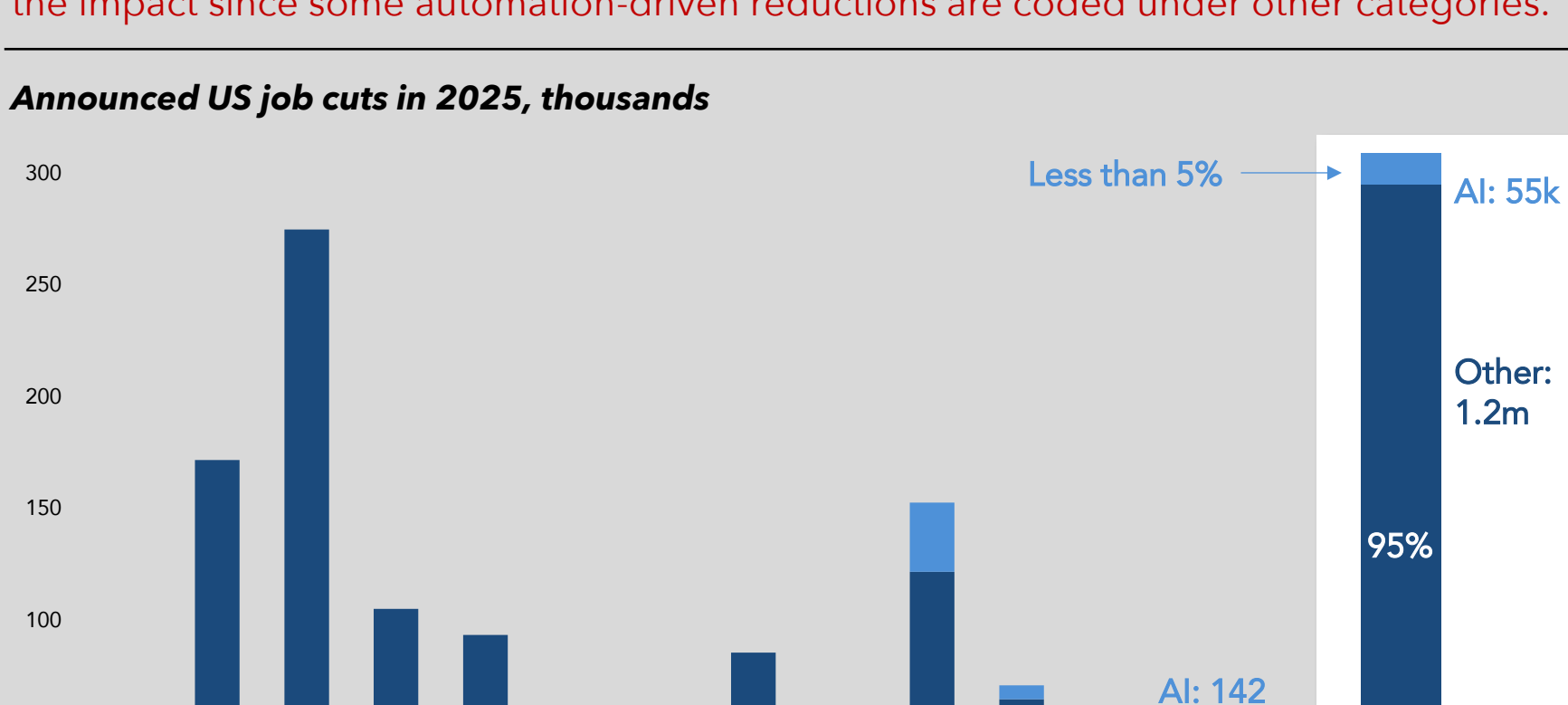
Source: (1) AI Index Steering Committee, Stanford University Institute for Human-Centered AI, "The AI Index 2025 Annual Report" (April 2025). Lightcast (2024).

AI-Related US Jobs Cuts Were Low in 2025



US employer-reported data for 2025 indicated that AI-related layoffs were a relatively small share of total US job cuts on the year, even though they grew on absolute terms. Of more than 1.2 million total job cuts announced on the year, less than 5% were attributable to AI. Some economists argue that labor market data modestly understates the impact since some automation-driven reductions are coded under other categories.

Announced US job cuts in 2025, thousands

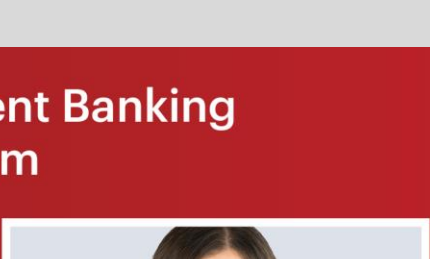


Source: (1) JP Morgan Asset Management. Challenger, Gray and Christmas. Data as of January 8, 2026.

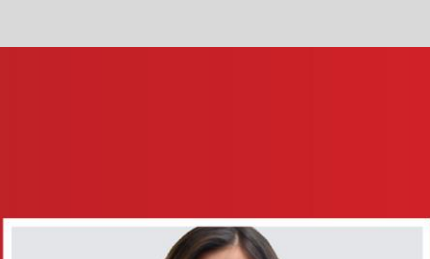
Global Corporate & Investment Banking Capital Markets Strategy Team



Tom Joyce
Managing Director
Tom.Joyce@mufgsecurities.com
(212) 405-7472



Stephanie Kendal
Vice President
Stephanie.Kendal@mufgsecurities.com
(212) 405-7443



Angela Sun
Associate
Angela.Sun@mufgsecurities.com
(212) 405-6952

"Macro stability isn't everything, but without it, you have nothing."